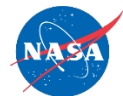


# ABOVE Science Cloud Webinar: System Updates and Q & A

September 16<sup>th</sup>, 2016



[above.nasa.gov](http://above.nasa.gov) @NASA\_ABoVE



# Agenda

1. Changes to the Windows systems – Ben Bledsoe
2. NGA DigitalGlobe Data– Scott Sinno
3. Schedule for ArcGIS implementation – Jim Shute

# Changes to Windows

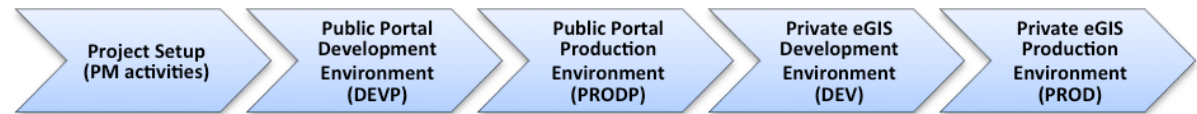
- Reminder: ADAPT domain has been retired/migrated to ADC
- All users who were on the ADAPT domain and have not logged into ADC as of yet can find their temp password in a .txt file in their home directory (ngalogs/dsclogs). Remember to use ADC\username
- Guacamole has gone public
  - <https://guac.nccs.nasa.gov>
  - Launchpad Sign In
  - Guacamole Sign In (same password as ngalogs/dsclogs)
  - Windows Sign In
- FAQ for Windows Users on NCCS Website  
[https://www.nccs.nasa.gov/services/adapt/windows\\_faq](https://www.nccs.nasa.gov/services/adapt/windows_faq)
- If there are any users who are waiting on Windows access and did not receive the onboarding email, please contact Ben Bledsoe ([ben.bledsoe@nasa.gov](mailto:ben.bledsoe@nasa.gov))

# NGA DigitalGlobe Data

## 1. NGA DigitalGlobe Data Issues

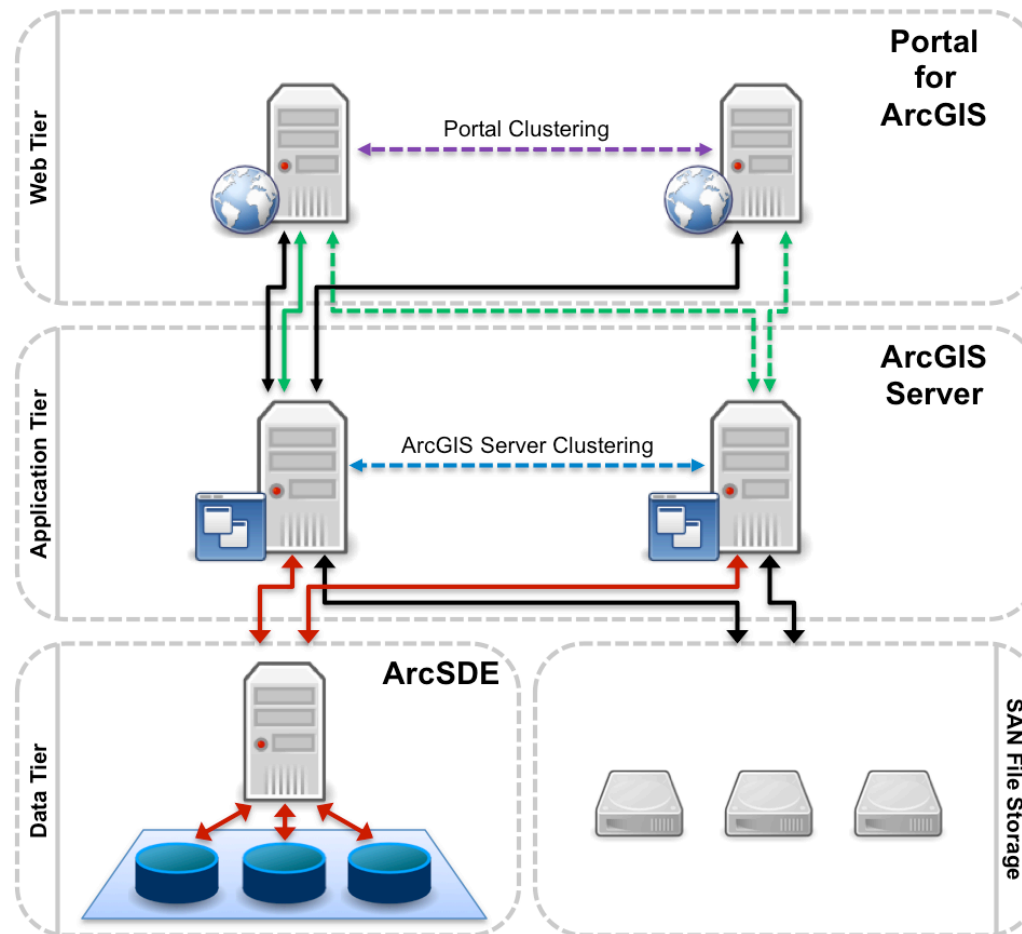
- Moving the NGA volume (gluster to gpfs)
- NGA data unmounted from login nodes
- Reminder on use agreement

# ArcGIS Implementation

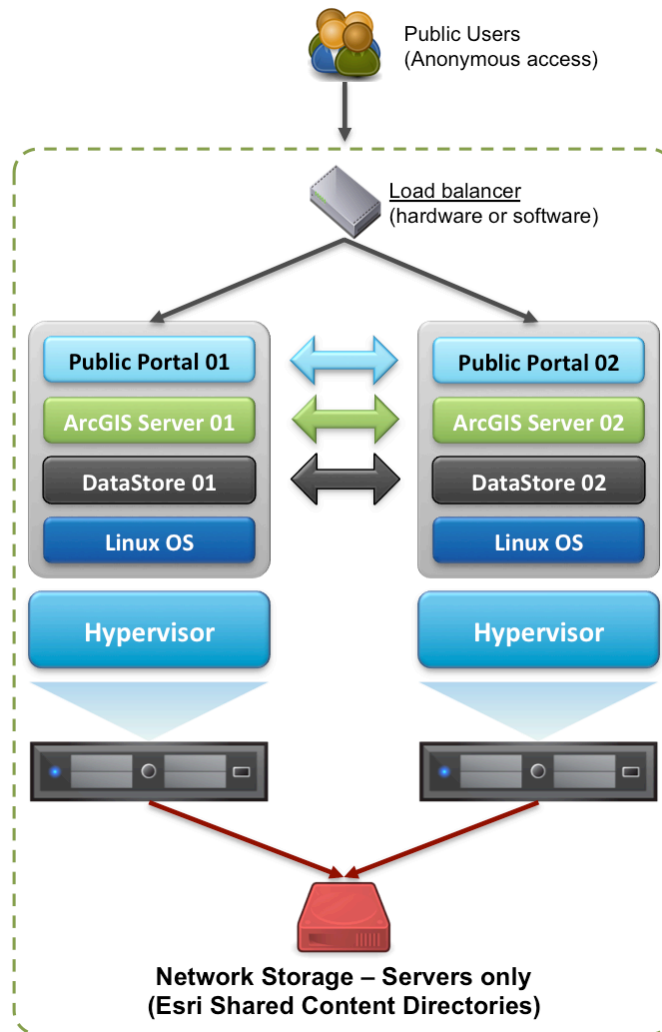


- Public Portal
  - Similar to existing ArcGIS Online experience
  - Development environment (10/13/2016)
  - Production environment (11/15/2016)
- Private eGIS (ADAPT only)
  - Full Desktop / Server implementation
  - Development environment (12/30/2016)
  - Production environment (2/13/2017)

# Esri 3-Tier Architecture



# Public Portal



# Private eGIS

